

## ***Ready to Bag a Buck?***

**Firearm Season - November 15-30, 2018**

***Schoolcraft County is the second largest county in Michigan by land with the least amount of people which is why the Manistique Deer Management Unit saw an estimate 6,028 hunters in 2017. These hunters harvested an estimated total of 2,094 deer.***



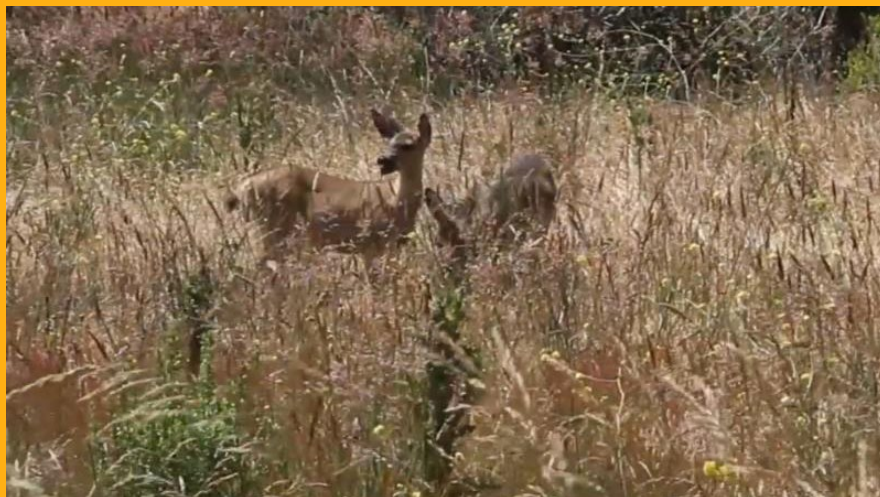
### ***Reasons to hunt in Schoolcraft County:***

- 1. Less crowded - not only are there less residents but you won't be surrounded by hunter's orange as you sit in your blind***
- 2. Snow for tracking - chances of snow are good the first week of hunting***
- 3. Easy access to acres of public hunting land***
- 4. Hanging on the 2017 Schoolcraft County buck poles were many***

***8-9-10 point bucks***

### ***Where to hunt in Schoolcraft County:***

- 1. [Hiawatha National Forest](#)***
- 2. [Map of Public Lands open to hunting](#)***



***The Manistique Tourism Council welcomes hunters and invites them to make the Manistique Area their hunting camp headquarters.***





**Lodging**

Lowest prices for **QUALITY** lodging in all of Michigan during hunting season



**Dining**

Warm up with **delicious**, hot, home-style dinner specials at local restaurants



**Fun**

Relax at Kewadin Casino and win a few **"bucks."**



**Michigan DNR Deer hunting links**



[Facebook](#)

[Local business directory](#)

Manistique Tourism Council | (800) 342-4282 | info@visitmanistique.com | [Website](#)