

visit  
**MANISTIQUE**  
IN PURE MICHIGAN'S UPPER PENINSULA



# VISITORS GUIDE

## 2025

[visitmanistique.com](http://visitmanistique.com)

**DAILY PRESS**  
your voice. your future.



City Of Manistique







# YOUR KEY TO WINNING

Unlock yourself in Kewadin Country and all that it has to offer. Great Lakes, majestic forests and grand islands are waiting for you to explore. When it's time to take a break, you'll find the key to winning, great rewards and fun times at Kewadin Casinos.

- RV Park
- Great Dining and Bar
- Hot Slots & Table Games
- Sports Betting

Call 1-906-341-5510 for a FREE shuttle to Kewadin Casino Manistique.\*

\*shuttle service based on availability



**Kewadin**  
MANISTIQUE  
CASINO

1-800-KEWADIN | [www.kewadin.com](http://www.kewadin.com)

**MANISTIQUE • ST. IGNACE • HESSEL SAULT • MARIE-CHRISTMAS**

## TREASURE CITY

HOME AND LODGE DECOR, TEES, SWEATS, MOCCASINS, SOUVENIRS, CANDY & FUDGE, CANDLES, JEWELRY, & SO MUCH MORE



### LARGEST GIFT SHOP UP NORTH

10,000 SQUARE FEET OF SHOPPING UNDER ONE ROOF  
4 MILES EAST OF MANISTIQUE ON HIGHWAY 2



**OPEN 7 DAYS A WEEK AND MOST HOLIDAYS**

**Find Us on Facebook [treasurecityupmi.com](https://www.facebook.com/treasurecityupmi.com)  
(906) 341-2364**



**BE SURE TO SHOP OUR 2ND LOCATION**

### TRADER BOB'S

LOCATED AT 375 TRADER'S POINT DRIVE ON THE MANISTIQUE RIVER  
BY THE MANISTIQUE LAKESHORE CAMPGROUND

NAUTICAL GIFTS, TEES & SWEATS, GOURMET CANDY, BOOKS, TOYS, AND MUCH MORE!  
HAND-DIPPED ICE CREAM • OPEN 7 DAYS A WEEK

**(906) 286-4500**





# DISCOVER MANISTIQUE

Welcome to a community where our local leaders and merchants are dedicated to ensure our community is a place where families and businesses can thrive and grow.

History, arts, nature and hikes are all an option here. Take a stroll on the boardwalk along Lake Michigan. Follow the path to the pier and check out the East Breakwater Lighthouse. We offer various dining and shopping that are along the way. Camping, kayaking, and fishing are a popular past time. We can't guarantee you will catch a fish, but you will certainly enjoy trying. Visit our newest UP resident Benny the Beard Fisher at the Germfask Campground. Trolls may live in the UP after all!

Historical sites to visit include Palms Brook State, Seul Choix Point Lighthouse in Guilliver, the Fayette State Park in Garden, and Kitch-Iti-Kipi on Indian Lake just to name a few. This area is rich with stories that date to the day of the dinosaurs and there are a few ghost stories as well.

Manistique is centrally located; just a short drive from the Pictured Rock Lake Shore, the Great Mackinac Bridge, and the city of Marquette. Enjoy your time and be safe as you navigate the amazing places in our part of the UP!

Imagine what you can Discover!

Sincerely,

**Kimberly Shiner**

Mayor



# WHAT'S INSIDE

- 6 Haywire Grade
- 7, 27-28 Trout and Salmon Derby
- 12-13 Canoeing
- 16-17 Manistique Attractions
- 18-19 22 Reasons To Visit Manistique
- 24-26 Church Directory
- 30-31 Lodging
- 34-35 Area Trails
- 38-39, 41 Fishing
- 46-47 Hub Map
- 50-51 Snowmobiling
- 53 Nearby Attractions
- 54 Business Directory
- 62 Summer Events



*This publication is a Product of the  
Daily Press, Escanaba, Michigan*

## PUBLISHER

Sarah Greenlund  
smaki@dailypress.net  
906.786.2021 Ext. 101

## CIRCULATION

Jennifer Flynn  
jflynn@ironmountaindailynews.com  
906.786.2021 Ext. 218

## ADVERTISING COORDINATOR

Jessica Koth  
jkoth@dailypress.net  
906-786-2021 Ext. 115

## ADVERTISING

Want to be included in 2026?

Contact Zoey LaPine  
Email: zlapine@dailypress.net  
906-786-2021 Ext. 196

## DAILY PRESS

*Manistique Visitor's Guide  
is published by the Daily Press,  
600 Ludington Street, Escanaba  
Michigan 49829 • 906-786-2021*



## HAYWIRE GRADE

In 2020 was the 50th anniversary of the designation of the Haywire Grade Trail as the first rail-trail in Michigan. It was opened in 1970. In preparation for the trail's 50th anniversary in 2020, improvements to the trail have been made, including the addition of mile markers and new signage. Eleven new interpretative kiosks are installed at various weigh points along the trail. It was part of the Manistique & Northwestern Railroad that was completed in 1898. The purpose of the railroad was to haul white pine timber from logging camps to lumber mills in Manistique.

The trail runs from the Water Intake Park in Manistique to M-94 south of Shingleton on a surface of gravel, dirt and sand; about 33 miles. It also includes ballast from the old rail bed upon which it runs. It follows the former Manistique and Lake Superior Railroad. The multi-use pathway is primarily used by ATV riders in summer and snowmobilers in winter. The trail is also open to mountain biking, hiking and horse riding.

The trail crosses miles of 2nd growth forest with great distances with nothing but forests and plains. One small town is still in existence from the old days, Stueben for instance, where there is a small store to get supplies.



Photo by Michigan DNR

## TROUT & SALMON DERBY

R. R. Branstrom  
rbranstrom@dailypress.net  
MANISTIQUE —

A popular and high-paying fishing derby in Manistique will put anglers' skill and luck to the test for the 40th year come July.

The Manistique Trout and Salmon Derby consists of a main tournament the weekend of July 26 and 27, a women's tournament on Friday the 25th, and "pre-fishing" contests Monday through Thursday.

The competition has been organized by the Manistique Area Sport Fishing Club, a 501(c)(4), for 11 years now, said President Brett Tallman. The club took over the event that first began in 1985 from forerunner Schoolcraft County Sportfishing Association.

With a landmark year upon the derby, the club wanted to do something special, so some prizes have been added, thanks to the support of area businesses.

Each day of pre-fishing awards a total of \$1,750: the top three largest fish — usually salmon — earn their captors \$1,000; \$300 and \$200. New this year, the angler with the heaviest trout each day also takes home \$250.

"It usually works where (the top three) are always salmon — they're just bigger," said Tallman. "So that's why we threw in the heaviest trout category this year; people were bummed out when they got a big trout and didn't get no money."

The \$40 registration fee for the main weekend tournament (continued on pg. 27)



### WACKY JACKZ

offers a variety of quality cannabis products, and a whole experience to go with it. Our friendly and knowledgeable staff will greet you in our vibrant set up, and help find the best products specific to your needs.

### Deli Style Shopping

12840 US Highway 2, Rapid River, MI 49878  
7043 Hwy 2& 41 & M35 Gladstone MI 49837  
info@wackyjackz.com • 906.474.5220

Follow Us



## CITY OF MANISTIQUE

The historic city of Manistique is the commercial hub of Schoolcraft County and is home to the picturesque Manistique Marina, which offers transient slips and broadside docking, as well as seasonal slips and ideal fishing opportunities. For those looking for a scenic walk, a 1.43 -mile long boardwalk runs along the Lake Michigan shoreline from the marina, past the East Breakwater Light, and on, east for about a mile. It's an easy walk - level and smooth, and offers plenty of sights. The marina is open from Memorial Day weekend through Labor Day weekend. Not far from the marina is Manistique's charming downtown area which offers plenty of shopping and dining opportunities. Nearby Central Park provides 40-acres of recreational space. It is located on N. Maple St., next to Little Bear West Arena in Manistique. This park, which features a crystal clear pond for swimming and fishing as well as other recreational opportunities, is an excellent place to spend a summer day. The Schoolcraft County Historical Park, located in Manistique's central district is another highlight of the community. The park boasts the city's historic water tower and a log cabin that was once home to early residents of the county. For those who may be looking for a taste of Las Vegas, the Kewadin Casino offers a variety of on-site amenities, entertainment venues, dining options, convention facilities, and exciting Las Vegas-style gaming action, including slots and your favorite table games, like Poker, Keno, Craps, Blackjack, Let it Ride, and Roulette. It is located on US-2, approximately two miles east of Manistique, and is open 24 hours, seven days a week. Free shuttle service is available by calling 906-341-5510



Find us on 230 Arbutus Ave. Manistique, MI 49854  
 (906) 221-5371 • [thebluemystiqueinn.com](http://thebluemystiqueinn.com)

[WWW.VISITMANISTIQUE.COM](http://WWW.VISITMANISTIQUE.COM) • [WWW.CITYOFMANISTIQUE.ORG](http://WWW.CITYOFMANISTIQUE.ORG)

## FAYETTE HISTORIC STATE PARK

Shores of Big Bay de Noc



Fayette was once one of the Upper Peninsula's most productive iron-smelting operations. Located on the Garden Peninsula at Snail Shell Harbor. When the charcoal iron market began to decline, the Jackson Iron Company closed its Fayette smelting operation in 1891.

4785 Il Road, Garden MI 49835 • 906-644-2603

## Celebrating over 50 Years in Manistique



*Clyde's*  
DRIVE-IN  
RESTAURANT

201 Chippewa Avenue,  
Manistique, MI 49854

906-341-6021



Home Of The  
"BIG C" Burger....

[WWW.VISITMANISTIQUE.COM](http://WWW.VISITMANISTIQUE.COM) • [WWW.CITYOFMANISTIQUE.ORG](http://WWW.CITYOFMANISTIQUE.ORG)





# BEST IN THE



# MIDWEST



**Higher Love Cannabis Co.  
is bringing flower to the people.**

With the largest selection and unbeatable value, we're your go-to destination for all things cannabis. From seed to sale, we control every step of the process to ensure unmatched quality. Voted Best Brand, Best Sativa, Best Farm-to-Table Cannabis, and more!

## FREE STUFF FOR OUR BEST BUDS!

Sign up for our loyalty program and receive \$10 off your next purchase just for signing up! Be the first to hear about sales, exclusive merch drops, and new products!



[findhigherlove.com](https://findhigherlove.com)

For use by individuals 21 years of age or older only. Keep out of reach of children. It is illegal to drive a motor vehicle while under the influence of marijuana. National Poison Control Center 1-800-222-1222. Nothing for sale.



# CANOEING



## AuTrain River

Meandering north from the AuTrain Lake Campground approximately 10 miles to Lake Superior and offers a four-to six hour canoe trip beginning at the Forest Service boat launch.

## Big Island Lake

Offering secluded canoeing, fishing, hiking and camping opportunities with more than 20 inland lakes and woodlands. Big Island Lake covers 6,606 acres and is primarily roadless, with limited access to motorized vehicles to three of the lakes.

## Flowing Well Campground

Situated on the banks of the Sturgeon River, offers camping, fishing, picnicking and canoeing in this serene setting.

## Indian River

Located at Fish Lake, Approximately 36 miles Northeast of Manistique, almost 36 miles long and offers excellent canoeing.

## Big Cedar Campground

Take a relaxing trip on the Manistique River through the southern portions of the Seney Wildlife Refuge. Located on Hwy. M-77 in Germfask.



**40<sup>th</sup> MANISTIQUE TROUT & SALMON DERBY**  
**July 26 and 27**

**Guaranteed PRIZES**

<b>1<sup>st</sup> Place Salmon</b> <b>\$10,000</b>	<b>1<sup>st</sup> Place Trout</b> <b>\$5,000</b>
---	---

Also paying 2nd—8th Place in Both Categories - 80% Payback on Registration Fee  
 \$40 per Person Registration Fee to Enter

**4 Day Pre-Fishing Contest**  
 July 21 - July 24

<b>\$1,500</b> First Day Cup for guide	<b>\$1,000/Day's Largest</b> <b>\$300/Day's 2nd</b> <b>\$200/Day's 3rd</b>	<b>\$250 HEAVIEST TROUT</b> Per Day to be given
--	---	--

**Women's Tournament**  
 Friday, July 25 | 5:30am - 2pm

<b>\$100 Per Boat</b> Non-Team Fun, Amateur Only	<b>\$250 Prize</b> To largest Salmon and Trout caught on Friday
---	--

1<sup>st</sup> - \$1,000  
 2<sup>nd</sup> - \$750  
 3<sup>rd</sup> - \$500

**OPTIONAL 3-3-3 SIDE TOURNAMENT - \$100 Per Boat**  
 80% Payback for Top 3 Places

Tournament boats can be purchased at the following: Lander's Boat Box • Top O'Lake Sport Shop • Offshore • • • Bay's Place  
 For more information call BRETT AT (906) 286-0234  
 For Lodging go to: www.visitmanistique.com  
 Over \$40,000 in Cash and Prizes Awarded on 354 entries. Tournament Boats, 10/10, 10/10, 10/10, 10/10!

# CANOEING

## Northland Outfitters

Take a relaxing trip in a kayak or canoe down one of those beautiful rivers. Choose from day trips as short as 1 1/2 hours to overnight trips from 2 to 7 days.

## USDA National Outfitters

Canoeing or non-motorized boats are allowed at several of the lakes and rivers located within the Hiawatha National Forest.



In all of Michigan there is no other area that offers the canoeist and kayaker so many opportunities as Schoolcraft County. Whether you are a novice or an avid canoeist there is a body of water here for you.

## Tahquamenon Falls Brewery & Pub at CAMP 33

Enjoy Fine Dining, Handcrafted Beer & Root Beer, Fine Gifts & Native American



OPEN ALL YEAR  
 (Except April & November)

OPEN 10:30AM Daily  
 Serving Food 11AM - 8:30PM  
 (906) 429-3300

Located within the Upper  
 Tahquamenon Falls Park on M-125,  
 23 miles North of Newberry,  
 14 miles South of Paradise

## NOW IS THE TIME!

Where Education Meets the Heart of Our Community

Scholarships Available • Affordable Education • Degrees & Certificates  
 Transfer Programs • Financial Aid • Online Options • Free Tutoring



[www.baycollege.edu/pathways](http://www.baycollege.edu/pathways)



# Manistique Lakeshore Campground.org



City of  
Manistique

- 22 acres of property.
- 56-site campground, officially known as the Manistique Lakeshore Campground, is located near the intersection of U.S. 2 and Trader's Point Drive.
- Offering a wide variety of amenities to campers. Wi-Fi is available at the campground, and 50 of the campsites include hookups for electricity, water, sewers, and cable television.
- Six "primitive" sites including hookups for electricity only.
- Reservations available online at [manistiquelakeshorecampground.org](http://manistiquelakeshorecampground.org)
- Buildings containing public restrooms, showers, and laundry, an office building for guest registration, and a day use pavilion (which also contains public restrooms).





Stay A While

# MANISTIQUE ATTRACTIONS

## Breakwater Light & Boardwalk

The East Breakwater Light, built in 1916, is 35 feet tall and stands at the harbor entrance of the Manistique River. The light is housed in bright-red square tower that is capped by a black parapet lantern room. A black staircase climbs up from the pier several feet to the door at the bottom of the tower. Only a few small round windows allow light into the interior of the structure. Parking for visitors is available at Lakeview Park, the city beach and marina.

## Pioneer Day

Pioneer Day is annual tradition that started out as a fundraising event for the Schoolcraft County Historical Society. Over the years, the event has grown to be a community favorite, with musicians, crafters, and historical demonstrations that keep the history of Schoolcraft County alive.

## FolkFest

Manistique's Folkfest is a celebration that takes place the second Saturday in July on the main street of the city. Art and craft booths display their diverse wares on the second block continuing north on Cedar Street, while the aromas of multicultural food booths tempt visitors down the street. A central stage provides ethnic music and entertainment with the Paul Buuyan



**Habitat for Humanity**  
**ReStore**

In the  
Blanchard Center  
**401 Deer Street**  
**Manistique, MI 49854**  
**906.341.1444**

Present this ad for  
**25% Off**  
your next  
purchase\*

\*Limit 1 coupon per household  
Expires 12/15/25

WWW.VISITMANISTIQUE.COM • WWW.CITYOFMANISTIQUE.ORG

Stay A While

# MANISTIQUE ATTRACTIONS



## FolkFest Continued...

Beer Garden close by. The celebration includes a children's area and a variety of information booths for adults to investigate. Folkfest is truly an event for everyone. Consistently ranked as a favorite small town getaway by visitors, Manistique's natural beauty provides the perfect backdrop for day of antiquing and shopping. Specialty stores, charming restaurants, friendly residents, cozy taverns, the historic water tower and lighthouse, plus a full calendar of festivals, entertainment and special events, combine to make Manistique irresistible - and it's on the shores of beautiful Lake Michigan.

For applications for the art and crafts booth or to be a vendor, call Manistique City Hall, 906-341-2090.



Get your Fill  
of the Fun this Summer  
at the Fair!

**Michigan's Oldest  
State Fair!**  
**August 11-17, 2025**



**CHINESE RESTAURANT** TAKE OUT & EAT IN  **Free Hot Tea and Soda**

**CHINA KING**

•CANTONESE  
•SZECHUAN  
•HUNAN CUISINE

Tel.: 906-341-8886  
Fax: 906-341-8885

Mon.-Sat. 11:00am-9:00pm  
Sun. 3:00pm - 8:00pm



201 SOUTH CEDAR ST.  
MANISTIQUE, MI 49854

WWW.VISITMANISTIQUE.COM • WWW.CITYOFMANISTIQUE.ORG



HAWATHA NATIONAL FOREST



SENEY NATIONAL  
WILDLIFE REFUGE



22

Reasons to Visit  
**MANISTIQUE**  
IN PURE MICHIGAN'S UPPER PENINSULA



22

12

15

14

13

MANISTIQUE

16

21

17

19

18

BIG BAY DE NOU

20

LAKE MICHIGAN

9

10

11

8

3

1

2

4

5

7

6



- 1 EAST BREAKWATER LIGHTHOUSE
- 2 MANISTIQUE MARINA
- 3 MACKINAW TRAIL WINERY TASTING ROOM
- 4 CARL D. BRADLEY LAKEVIEW PARK
- 5 MANISTIQUE BOARDWALK
- 6 MANISTIQUE CENTRAL PARK
- 7 HISTORIC WATER TOWER / SIPHON BRIDGE
- 8 ENVIRONMENTAL EDUCATION LABORATORY
- 9 THOMPSON STATE FISH HATCHERY
- 10 INDIAN LAKE STATE PARK
- 11 BISHOP BARAGA SHRINE
- 12 RAINEY WILDLIFE AREA
- 13 THOMPSON HISTORICAL SITE
- 14 KEWADIN CASINO
- 15 KITCH-ITI-KIPI / PALMS BOOK STATE PARK
- 16 SEUL CHOIX POINT LIGHTHOUSE
- 17 SENEY NATIONAL WILDLIFE REFUGE
- 18 COLWELL LAKE PATHWAY
- 19 PINE MARTEN RUN
- 20 FAYETTE HISTORIC STATE PARK
- 21 BENNY THE BEARD FISHER
- 22 HAYWIRE GRADE TRAIL



## Kicking Up Powder

# SNOWMOBILING

The Upper Peninsula is a true destination for snowmobilers. Whether you want to take a quick ride along the Manistique River on a scenic trail or tap into the more than 2,000 miles of groomed trails the U.P. offers, there's something for every snowmobiler.

## Approximate Mileage

GRAY WOLF LODGE TO TRAIL HEAD	3.5 MILES	MANISTIQUE TO BUCK HORN	66 MILES
MANISTIQUE TO BIG SPRINGS	16 MILES	MANISTIQUE TO GARDEN	30 MILES
MANISTIQUE TO JACK PINE	19 MILES	MANISTIQUE TO CURTIS	68 MILES
MANISTIQUE TO SHINGLETON	39 MILES	MANISTIQUE TO AUTRAIN	59 MILES
MANISTIQUE TO MUNISING	47 MILES		
MANISTIQUE TO SIDE TRACKS	18 MILES		
MANISTIQUE TO BLANEY	47 MILES		
MANISTIQUE TO GRAND MARAIS	91 MILES		
MANISTIQUE TO BIG BAY	140 MILES		
MANISTIQUE TO PARADISE	137 MILES		
MANISTIQUE TO GWINN	112 MILES		
JACK PINE TO BIG SPRINGS	19 MILES		
SHINGLETON TO BUCK HORN	12 MILES		
GRAND MARAIS TO PARADISE	78 MILES		
CURTIS TO SENEY	23 MILES		
SENEY TO GRAND MARAIS	46 MILES		
SHINGLETON TO GRAND MARAIS	52 MILES		
NEWBERRY TO PARADISE	62 MILES		
NEWBERRY TO GRAND MARAIS	59 MILES		
MANISTIQUE TO NAUBINWAY	66 MILES		
MANISTIQUE TO NEWBERRY	75 MILES		

## Permit Information

Snowmobile trail permits are available online at [michigan.gov/dnr](http://michigan.gov/dnr) and are required for use of state-designated trails, public roads, and private roads (where authorized for snowmobile use).



Photo by Connie Diller



# SCHOOLCRAFT MEMORIAL HOSPITAL



## Why not work where you vacation?

Explore career opportunities with competitive benefits

**SCMH.ORG/Careers**



# OUR SERVICES

## Hospital Services

- 24-hour Emergency Dept.
- 12 Bed Acute Care Unit
- 2 Operating Rooms
- Outpatient Services
- Cardio-Pulmonary Care
- Health Education & Training
- Laboratory
- Medical Imaging/Radiology
- Medical/Surgical Nursing
- Social Services
- Swing Bed Services

## Rehabilitation & Aquatic Therapy Center

- Aquatic Therapy
- Occupational Therapy
- Physical Therapy
- Speech Therapy

## Rural Health Clinic

- Family Medicine
- Behavioral Health Services
- RediCare Same Day Clinic
- Telehealth
- Commercial Driver's License Physical Exams (CDL)
- Naubinway Rural Health Clinic

## Specialty Care Services

- Bariatric Surgery
- Cardiology
- Ear Nose & Throat (ENT)
- General Surgery
- Orthopedics
- Physical Medicine & Rehabilitation
- Urology
- Surgical Podiatry
- Wound Care Clinic

## Traveling Specialists

- Audiology
- Bariatrics
- Cardiology
- Dermatology
- Interventional Radiology
- Neurosurgery
- Obstetrics
- Oncology
- Pediatrics
- Sleep Medicine
- Vein & Pain Clinics

## HomeCare & Hospice

- Nursing
- Physical, Speech and Occupational Therapy
- Medical Social Work
- Counseling/Support
- Home Health Aides



SCAN THIS QR CODE WITH YOUR  
CAMERA APP TO LEARN MORE  
ABOUT OUR SERVICES

**SCMH.ORG**

Schoolcraft Memorial Hospital is an equal opportunity provider and employer.  
Schoolcraft Memorial Hospital is a 501(c)(3) Charitable Services Organization

7870W US HWY 2 | 906-341-3200  
Manistique, MI 49854 | Toll Free: 888-460-8724



Stay Lakeside

## BLUE MYSTIQUE INN



Manistique, MI – More than just a place to stay, The Blue Mystique Inn offers guests a full experience of relaxation, luxury, and fine dining. With each night's stay, guests enjoy a full sit-down breakfast, freshly prepared and elegantly served on fine dinnerware. This thoughtful touch sets the Inn apart, offering a level of comfort and hospitality that makes it a true getaway destination.

Elizabeth Douglas, owner and operator of The Blue Mystique Inn, expressed her gratitude for the community's support. "Our first summer tourist season exceeded expectations, and we're thrilled to have returning guests already booked for this year," she said. "The community's enthusiasm has been instrumental in our success, with numerous private parties and reservations at our Chef's Table."

The Blue Mystique Inn offers a unique



**Sept. 19<sup>th</sup>, 20<sup>th</sup> & 21<sup>st</sup>, 2025**  
(Fri. 3p-8p) (Sat. 9a-6p) (Sun. 9a-3p)

in Escanaba, MI at the  
**U.P. State Fairgrounds**  
on  
**LITTLE BAY DE NOC**



### Thousands of Products & Services!

- Guns
- Tackle
- Custom Rods
- Knives
- Archery
- Campers
- Deer Blinds
- 5x5's
- Guide Services
- Hunting Supplies
- Deer Blinds
- Tree Stands
- Jerky
- Game Calls
- Outdoor Magazines
- Sporting Equipment
- Camping Equipment
- Fish Pond
- Minnow Races
- Food Trucks On Site
- AND MUCH MORE!

**THE LARGEST OUTDOOR SHOW  
IN THE AREA!**

**ADMISSION IS  
FREE  
WITH A CANNED  
GOOD  
DONATION  
OR ANIMAL  
SHELTER  
DONATION**

**GOOD FOOD!  
GREAT PRIZES!  
SEMINARS  
FAMILY FUN ZONE!**

Accepting Vendor Applications until September 1, 2025  
Call 906-786-2021 Ext. 115 for more information

This Free event is made possible by:



## MANISTIQUE Big Boy

★ **Hot Buffets** ★  
**Breakfast & Dinner**

607 E Lakeshore Dr  
Manistique  
906-341-6941



Open Daily  
7:am-9:00pm

For online orders  
visit our Facebook page or  
find us on Door Dash!

## CHRISTOPHER'S ANTIQUES

*Jewelry • Toys  
Clothes • Furniture  
Sporting Goods  
Tools & Much More!*



211 Oak St.,  
Manistique, MI  
49854

**(906) 341-2570**

**Open  
4/1 - 12/31  
Mon-Sat  
9am-5pm**



Your Sunday Place

# MANISTIQUE AREA CHURCHES

Pages 24-26

## Bethel Baptist Church

118 E. Elk Street • 906.341.5561

## Cedar Grove

## Mennonite Church

1275W Kendall Road • 906.341.3435

## Church of Jesus Christ of Latterday Saints

208 South Cedar Street • 906.341.1918

## First Baptist Church, ABC-USA

1315 Walnut Street • 906.341.2814

## First United Methodist Church

190 North Cedar • 906.341.6662

## Hiawatha Country Church (Foursquare Gospel)

M-94 North Manistique • 906.341.6090

## Jehovah's Witness Kingdom Hall

851 Garden Ave. • 906.341.8214

## Manistique Harbor Pentecostal Church of God

813 Arbutus Ave. • 906.286.9433

**Zion Lutheran Church**  
435 Oak St, Manistique, MI  
**Welcomes You!!**

**Saturday - Worship at 5:00pm**  
**or Sunday - Worship at 11:00am and ZOOM.**

**Questions call the Church office Wednesday, Thursday, or Friday 9am-noon**

Pastor Tommy Wimsae  
phone: 906-341-5427  
www.zionlutheran-manistique.org

**WELCOME WORSHIP WITNESS**

## St. Francis de Sales Catholic Parish

*A Welcoming Community*  
**~MASS TIMES~**

**• ST. FRANCIS DE SALES – Manistique**

330 Oak St., Manistique, MI 49854

**Saturday 4:00pm • Sunday 9:30am**

**Tuesday 5:30pm**

**Wed, Thurs, & Fri \*10:00am**

*(FROM MEMORIAL DAY TO LABOR DAY; WED, THURS, FRI MASS IS AT \*9:00AM)*

**• DIVINE INFANT OF PRAGUE – Gulliver**

1985W U.S. Hwy 2, Gulliver, MI 49840

**Sunday 11:30am**



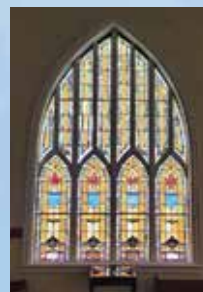
Monthly pasty sales on the second Wednesday & Thursday each month

Groups that meet weekly:  
Adult Sunday School at 9:30 AM Sunday,  
Children's Worship Service,  
Bible Study & Prayer Group.  
United Women In Faith (United Methodist Women)  
have monthly meeting and activities.

Our weekly Church Service is available through  
YouTube Channel (visit [@ManistiqueFUMC](http://www.youtube.com) and search Manistique First UMC where you see the magnifying glass at the top of the page).

Visit Facebook search First United Methodist church  
ManistiqueUMC

Live Worship services are held  
every Sunday at 11:00 A.M.



190 N. Cedar Street Manistique, MI 49854  
906-341-6662 [www.manistiquemethodist.org](http://www.manistiquemethodist.org)



# MANISTIQUE AREA CHURCHES

## Maple Grove Community Church

5 miles East of Gulliver on U.S. 2 P.O.  
Box 71 • 906.283.3153

## Maple Harbor Bible Church

906.341.2100

## Presbyterian, PCUSA

314 Main Street • 906.341.5753

## Seventh Day Adventist Church

809N Duck Inn Rd. • 906.341.1844

## St. Albans Episcopal Church

301 Range Street • 906.341.5121

## St. Francis de Sales Catholic Church

330 Oak Street • 906.341.5355

## St. Martin's Lutheran Church

401 Deer St., Habitat  
Blanchard Center • 906.341.5427

## Zion Lutheran Church

435 Oak Street • 906.341.5427





Hiawatha Country  
Church  
Non-Denominational  
Sunday Service  
10:30 am  
Come as you are

**ALL ARE WELCOME!**  
**906-452-6131**  
**4740N State Hwy M94,**  
**Manistique, MI 49854**  
**10 miles North of Manistique**



319 Walnut St.  
Manistique, MI 49854

Sunday School:  
9:30 AM  
Sunday Morning Service:  
10:30 AM



# TROUT & SALMON DERBY

Continued from pg. 7

also grants entry to four days of pre-fishing (July 21 to 24).

On Friday, the women's tourney has a \$100 per boat entry fee. Prizes are issued to the three boats with the highest combined weight of their top three heaviest fish — \$1,000 for first; \$750 for second; and \$500 for third. \$250 prizes are also given for the single heaviest salmon and single heaviest trout.

The weekend main tournament draws a lot of attention — in past years, Tallman said, between 300 and 500 participants has been common. In 2025, though, a potential draw for more anglers may be the fact that the prize money has almost doubled: the former \$5,000 award for the first place salmon has been upped to \$10,000, and the first place trout will win \$5,000 as opposed to the \$3,000 prize of last year.

"We wanted to do something special for the 40th annual," said Tallman. "We may go back down to our old payouts next year."

Boats also have the option of entering for the chance to win the 3-3-3 side pot at the cost of \$100 per boat; the winner is the boat with the highest cumulative weight of its three biggest fish.

Second through eighth place pay out as well, with amounts based on how many people enter.

80% of registration fees go back to participants as winnings. The other 20% helps the Manistique Area Sport Fishing Club continue to administer events. The trout and salmon derby is one of the club's two annual events; they also operate an ice fishing derby on Indian Lake at the end of January.

While some prize money comes from entrants, much is made possible by generosity of community donations. Sponsors of the Manistique Trout and Salmon Derby include the Manistique Tourism Council, Fox Marquette, Nicolet National Bank, Mr. Chrome Lures, State Savings Bank, Nord Trucking, Paul's Plumbing and Appliance, and B&N Concrete.

Raffles and other drawings are also organized around the derby.

Tournament tickets may be purchased from Linda's Bread Box, Top O'Lake Sport Shop, Wheaty's Pub and Roy's Place.

All competitions of the July derby begin and end at the Manistique City boat launch. four days of pre-fishing (July 21 to 24).

On Friday, the women's tourney has a \$100 per boat entry fee. Prizes are issued to the three boats with the highest combined weight of their top three heaviest fish —



Courtesy photo

In 2022, first and third place during the first pre-fishing day of the Manistique Trout and Salmon Derby went to Brian and Marcie Klaven of Escanaba. 2025 is the 40th year of the derby, which will take place July 21 to 27.



## TROUT & SALMON DERBY



\$1,000 for first; \$750 for second; and \$500 for third. \$250 prizes are also given for the single heaviest salmon and single heaviest trout.

The weekend main tournament draws a lot of attention — in past years, Tallman said, between 300 and 500 participants has been common. In 2025, though, a potential draw for more anglers may be the fact that the prize money has almost doubled: the former \$5,000 award for the first place salmon has been upped to \$10,000, and the first place trout will win \$5,000 as opposed to the \$3,000 prize of last year.

"We wanted to do something special for the 40th annual," said Tallman. "We may go back down to our old payouts next year."

Boats also have the option of entering for the chance to win the 3-3-3 side pot at the cost of \$100 per boat; the winner is the boat with the highest cumulative weight of its three biggest fish.

Second through eighth place pay out as well, with amounts based on how many people enter.

80% of registration fees go back to participants as winnings. The other 20% helps the Manistique Area Sport Fishing Club continue to administer events. The trout and salmon derby is one of the club's two annual events; they also operate an ice fishing derby on Indian Lake at the end of January.

While some prize money comes from entrants, much is made possible by generosity of community donations. Sponsors of the Manistique Trout and Salmon Derby include the Manistique Tourism Council, Fox Marquette, Nicolet National Bank, Mr. Chrome Lures, State Savings Bank, Nord Trucking, Paul's Plumbing and Appliance, and B&N Concrete. Raffles and other drawings are also organized around the derby.

Tournament tickets may be purchased from Linda's Bread Box, Top O'Lake Sport Shop, Wheaty's Pub and Roy's Place.

All competitions of the July derby begin and end at the Manistique City boat launch.

**Nicolet**  
NATIONAL BANK  
Real People. Real Conversations.

130 S Cedar Street  
Manistique, MI 49854  
906.341.8401

NicoletBank.com | Member FDIC

## HIAWATHA NATIONAL FOREST



Named after Longfellow's poem "The Song of Hiawatha," the Hiawatha National Forest is located in the Central and Eastern Upper Peninsula of Michigan. The forest encompasses 880,000 acres, and receives over 1.5 million recreational visits per year. The forest affords visitors access to white sand beaches and relatively undeveloped shorelines along three of America's inland seas — Lakes Superior, Michigan, and Huron. For more information on camping, hiking, hunting, fishing and other recreational activities contact the Hiawatha National Forest, Manistique Ranger District at 906-341-5666.

**CAMPING WORLD**

*Your one stop for all your camping needs.  
Check out all our inventory.*

**Flagstaff**  
SUPER LITE

America's Recreation Dealer  
Your Hometown RV Dealer With National Support  
2905 North Lincoln Rd • Escanaba MI 49829  
**833-551-1532**  
www.campingworld.com

**BOAT/PONTOON/ATV/SXS**

**SALES/SERVICE/RENTALS**

www.curtisadventures.com  
www.FISHANDHUNTSHOP.com  
Curtis, MI - 906-586-9531



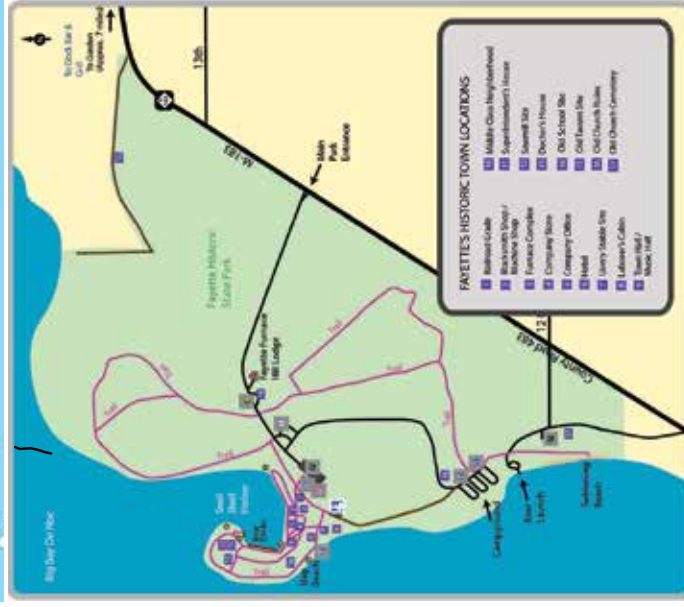
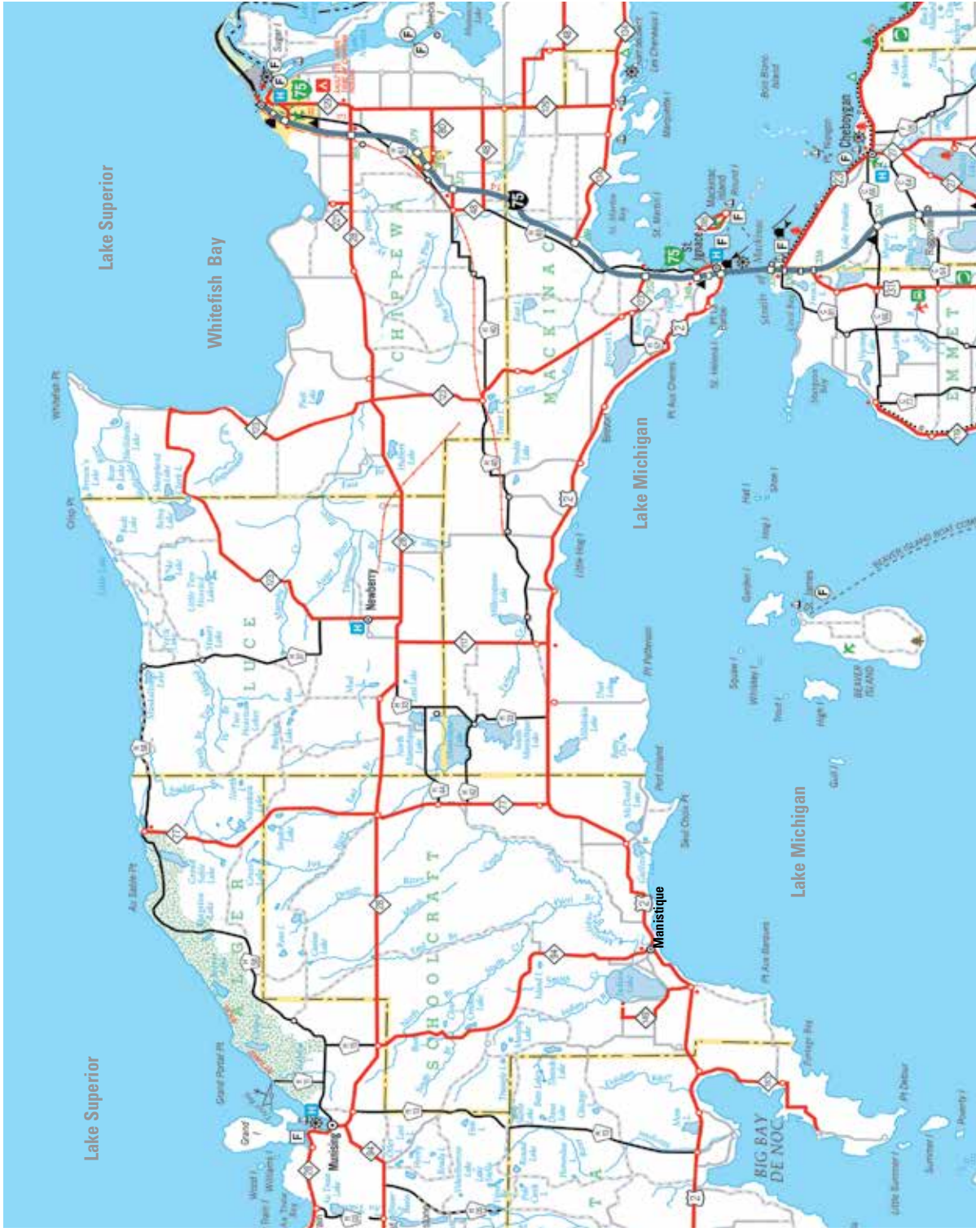
# Manistique Lodging

		Number of Units	Snowmobile Trail	Beach Access	Private Beach	View of Lake	Indoor Pool	Pets Allowed	Casino Shuttle	Meeting Rooms	WiFi	Cable TV	In Room Spas	Coffee in Room	In Room Refrigerator	Continental Breakfast
Budget Host Inn	906-341-2552 • 6031 W U.S. Hwy 2	26	•					•		•	•	•		•	•	
Colonial Motel	906-341-6656 • 1119 E. Lakeshore Drive	22					•	•		•	•			•		
Comfort Inn	906-341-6981 • 726 E Lakeshore Drive	57	•	•			•	•	•	•	•	•		•		
Econo Lodge Lakeshore	906-341-6014 • 1101 E Lakeshore Drive	32	•	•				•		•	•	•	•	•	•	•
Gray Wolf Lodge	906-341-2410 • 6670 W US Hwy 2	40	•	•	•	•	•	•		•	•	•	•	•		
Harbor Motel	906-341-5191 • 311 South Cedar	16	•					•		•	•		•	•		
Holiday Motel	906-341-2710 • 5939 W US Hwy 2	20	•					•		•	•			•	•	
Northshore Motel	906-341-4151 • 801 E Lakeshore Drive	12	•	•				•		•	•		•	•		
Quality Inn	906-341-3777 • 905 E Lakeshore Drive	55	•					•	•	•	•	•		•		
Star Motel	906-341-5363 • 1142 E Lakeshore Drive	20	•		•	•		•		•	•			•	•	

For more information visit [www.visitmanistique.com](http://www.visitmanistique.com) or scan this code









## AREA TRAILS

### HIKING, BIKING, SKIING, SNOWSHOEING TRAILS

#### Indian Lake State Park

Hiking, cross-country skiing. Located 2 miles west of Manistique. Trail length is 2 miles.

#### Indian Lake Pathway

Hiking, biking, cross-country skiing. Located 9 miles NW of Thompson via M-149. 3 Trail Loops - 1 Mile, 3 Miles, 4.5 Miles.

#### Fox River Pathway

Hiking and biking. Located 5 miles NW of Seney. Trail Length is 27.5 miles.

#### Seney National Wildlife Refuge Trails

Hiking, biking, cross-country skiing. Located 34.2 miles NW of Manistique. Pine Ridge Nature Trail - 1.5 miles, Wigwam Extension - 0.5 miles, Northern Hardwoods Trails - various lengths groomed for cross-country skiing.

#### Colwell Lake Hiking Trail

Hiking, cross-country skiing, snowshoeing. Located 30 miles N of Manistique. Trail length is 2 miles

## AREA TRAILS

#### Gemini Lake Pathway

Hiking and biking. Lake Superior State Forest, 12 miles NE of Melstrand at South Gemini Lake State Forest Campground. Trail length is 1.5 miles.

#### Schoolcraft County Environmental Laboratory

Hiking, and snowshoeing. Located 6 miles NE of Manistique. Seven trail loops - 1.79 miles total.

#### Ashford Lake Pathway

Hiking and cross-country skiing. Located 116 miles N of Manistique on M-94. Three trail loops - 3 miles, 6 miles, 9 miles.

#### Pine Martin Run

Hiking and horseback riding. Hiawatha National Forest, 30 miles NW of Manistique. Trail length is 25 miles.

### INTERPRETIVE TRAILS

**AUTRAIN SONG BIRD TRAIL** - AuTrain Campground. Trail length is 2 miles

**BAY FURNACE HISTORIC SITE** - Bay Furnace Campground. Located 1 mile west of Christmas. Trail length is 1/2 of a mile.

**MAYWOOD HISTORICAL TRAIL** - Located East of Rapid River. Trail length is .9 miles.

**ROUND LAKE CCC CAMP** - Located 12 miles East of St. Ignace. Trail length is .1 miles.



The  
**BOUDROSE**  
Lounge  
COCKTAILS  
WINE · CIDER · BEER



- Specialty Craft Cocktails
- Michigan spirits, wine, mead & ciders
- Small bites
- Private events & more



The Boudrose Lounge



@theboudrose

Located off US2 in Manistique at Trader's Point on  
the Manistique River

375 Traders Point Dr #5 (906) 286-4488

• Largest bear only ranch in the United States.  
49 bears, no cages, all habitats ~ walkabout  
• Feed and pet the cubs  
• All natural habitats to view and feed the bigger bears

**\$30 per car - Free admission to active military**

13814 County Road 407, Newberry, MI 49868

**Open: May 25th • Closing: October 5th**

906-293-3147 oswaldsbearranch.com

**OSWALD'S  
BEAR RANCH**



## Historical Park

## SCHOOLCRAFT COUNTY

The Schoolcraft County Historical Park is located in Manistique's central district.

Among the park's attractions is Manistique's Water Tower, a Roman period architectural landmark with a 200,000 gallon capacity. The tower was built in 1922, at a cost of \$62,450. The 200-foot octagonal brick tower commemorates the birth of the city's water works. Also in the park is a home and log cabin of early residents of Schoolcraft County.



**Riptide Ride**  
Adventure. Sights. Fun. We've Got It All!

25 Miles of Pictured Rocks!  
906-387-8888 | RiptideRide.com

TRIPADVISOR  
5.0 (100+ reviews)

BUY TICKETS ONLINE

QR CODE

LOOKING THROUGH  
THE VIEWING WELLS



**Open Season:**  
**Memorial Day  
Weekend**  
through  
**September 30th**

**Reservations  
HIGHLY  
recommended**

**Several tours  
offered daily**

Visit our website  
anytime, call or  
stop in our  
lighthouse themed  
giftshop for more  
information and  
booking.



**Glass Bottom  
SHIPWRECK TOURS**  
MUNISING, MI • GLASS BOTTOM BOAT TOURS



**Fun for all ages!**

**Daily Tours -  
Rain or Shine!**



Space is limited, buy tickets early!

**Buy tickets NOW**

**www.shipwrecktours.com**  
**(906) 387-4477**  
1204 COMMERCIAL STREET  
MUNISING, MI 49862

Explore two historical shipwrecks & cruise by Grand Island's  
East Channel Lighthouse, cliffs, caves and beaches!



# FISHING

Schoolcraft County offers a wide variety of fishing opportunities for anglers. Here are a few of them and some of the fish you may encounter.

## Warm Water Fishing

### Big Bass Lake

293 acres. Large mouth bass, northern pike, bluegill, yellow perch

### Beaton Lake

46 acres. Large & small mouth bass, pumpkinseed sunfish.

### Big Island Lake\*

130 acres. Large mouth bass, northern pike, muskellunge, bluegill.

### Blue Joe Lake

30 acres. Small mouth bass, bluegill.

### Boot Lake

121 acres. Walley, northern pike, large mouth bass, bluegill

### Byers Lake\*

149 acres. Northern pike, large mouth bass, bluegill, brown bullhead.

### Clear Lake

109 acres. Large mouth bass, small mouth bass, yellow perch.

### Coattail Lake\*

53 acres. Northern pike, large mouth bass, pumpkinseed sunfish, brown bullhead.

### Colwell Lake

153 acres. Large mouth bass, northern pike, black crappie, bluegill.

### Cookson Lake

35 acres. Large mouth bass, northern pike, bluegill.

### Crooked Lake

190 acres. Large mouth bass, northern pike, black crappie, bluegill, pumpkinseed sunfish.

### East Lake

54 acres. Large mouth bass, pumpkinseed sunfish, yellow perch, brown bullhead.

### Grassy Lake Lake

176 acres. Large mouth bass, northern pike, muskellunge, bluegill.

### Herman Lake

85 acres. Large & Small mouth bass, northern pike, bluegill, pumpkinseed sunfish.

### Hutt Lake

18 acres. Large mouth bass, bluegill, yellow perch.

### Indian Lake

8,400 acres. Yellow perch, walleye, northern pike, muskellunge, rock bass, small mouth bass, bluegill..

# FISHING

### Ironjaw Lake

293 acres. Large mouth bass, northern pike, bluegill, yellow perch

### Klondike Lake\*

293 acres. Large mouth bass, northern pike, bluegill, yellow perch

### Leg Lake

46 acres. Large & small mouth bass, pumpkinseed sunfish.

### Lily Lake

130 acres. Large mouth bass, northern pike, muskellunge, bluegill.

### Little Bass Lake

30 acres. Small mouth bass, bluegill.

### McKeever Lake

121 acres. Walley, northern pike, large mouth bass, bluegill

### Minera Lake

149 acres. Northern pike, large mouth bass, bluegill, brown bullhead.

### Muleshoe Lake

109 acres. Large mouth bass, small mouth bass, yellow perch.

### Big Murphy Lake

53 acres. Northern pike, large mouth bass, pumpkinseed sunfish, brown bullhead.

### Petes Lake

293 acres. Large mouth bass, northern pike, bluegill, yellow perch

### Rumble Lake

293 acres. Large mouth bass, northern pike, bluegill, yellow perch

### Sand Lake

46 acres. Large & small mouth bass, pumpkinseed sunfish.

### Steuben Lake

130 acres. Large mouth bass, northern pike, muskellunge, bluegill.

### Swan Lake

30 acres. Small mouth bass, bluegill.

### Three Island Lake

121 acres. Walley, northern pike, large mouth bass, bluegill

### Thunder Lake

149 acres. Northern pike, large mouth bass, bluegill, brown bullhead.

### Tom's Lake

109 acres. Large mouth bass, small mouth bass, yellow perch.

### Townloine Lake

53 acres. Northern pike, large mouth bass, pumpkinseed sunfish, brown bullhead.





# Open Year Round



- 40 Room Lodge • Whirlpool & Spa Rooms
- Located on Snowmobile & ATV Trails
- Indoor Pool & Hot Tub
- Private Beach

6770 West US Hwy. 2, Manistique, MI  
For Reservations call & visit 906-341-2410  
[www.graywolflodging.com](http://www.graywolflodging.com)



## Plumbing / Appliances / Furnaces Fireplaces / Boilers / Cabinetry

*Paul's  
Plumbing &  
Appliance, Inc.*



Plumbing • Appliances • Furnaces • Fireplaces

**906-341-5536**  
or toll free in the UP (800) 618-6764  
Visit us at [uppaulsplumbing.com](http://uppaulsplumbing.com)

152 River Street - Manistique  
Hrs: M-F 8am-4:30pm | 24/7/365 Emergency Services



## FISHING CONTINUED

### Warm Water Fishing

#### Triangle Lake

293 acres. Large mouth bass, northern pike, bluegill, yellow perch

#### Vance Lake

293 acres. Large mouth bass, northern pike, bluegill, yellow perch

#### Verdant

46 acres. Large & small mouth bass, pumpkinseed sunfish.

#### Wedge

130 acres. Large mouth bass, northern pike, muskellunge, bluegill.

### Trouts, Lakes, Rivers & Streams

#### Banana Lake

Rainbow

#### Lake Nineteen

Rainbow

#### Ned's Lake\*

Brook

#### Twilight Lake\*

Brook

#### Indian River

Brook, Brown

### Little Murphy Creek

Brook

### Little Indian River

Brook

### Stutts Creek

Brook (All Branches)

\*Wilderness regulations apply to this body of water. Check the DNR fishing guide for more information.



*Caring For You & About You*

Putvin Health Mart is a locally owned pharmacy specializing in serving our community with fast, friendly, and professional service, with over 65 years of combined experience!



Medication Services such as Prescription Refills, Online Refills, and Transfers and Durable Medical Equipment



Over the counter items such as pain medications, cold and allergy, vitamins and supplements, and much more!



We also have a photo kiosk, gifts, home decor, greeting cards, kid's toys, and special occasion items.

Follow us on Facebook! PutvinHealthMartMSTQ



211 S Cedar Street, Manistique  
Monday thru Friday 9am - 7pm,  
Saturday 9am - 5pm.

[www.putvinhealthmart.com](http://www.putvinhealthmart.com)  
906-341-5434



## BLUE MYSTIQUE INN CONTINUED

Chef's Table experience, featuring exclusive dinners crafted by Chef Joshua Curtis and his wife, Lori. Elizabeth always envisioned having a chef at the Inn, and Chef Joshua was delighted to bring that vision to life. They started small, offering just a couple of meals here and there, but demand quickly grew. Now, the Chef's Table has become a sought-after dining experience, available for private parties, special occasions, and Inn guests. This intimate, fine dining event, which gained popularity during the recent holiday season, offers a 5 to 7-course meal tailored to guests' dietary preferences and restrictions. Guests must book in advance and discuss any dietary needs, allowing Chef Joshua to create a personalized menu for each occasion. During the meal, the chef personally serves and discusses each course, enhancing the culinary experience.

Victoria George, Executive Director of Schoolcraft Tourism & Commerce, praised the Inn's impact on the local tourism scene. "The Blue Mystique Inn has quickly become a cherished addition to our community, offering both residents and visitors a distinctive lodging and dining experience," she remarked. "Elizabeth's dedication to providing exceptional service has set a new standard for hospitality in Manistique."

Elizabeth encourages residents to recommend The Blue Mystique Inn to family and friends visiting the area, highlighting the pampering services and unique experiences available. The Inn has recently booked its first wedding for this summer, further cementing its reputation as a premier destination.

Nestled in the heart of Michigan's Upper Peninsula, The Blue Mystique Inn is central to major attractions, including Big Springs and Pictured Rocks, while also being just steps away from parks, trails, dining, shopping, and nightlife. Whether guests are exploring the region or simply looking for a relaxing retreat, the Inn provides the perfect combination of comfort and convenience. Each of the five rooms features a private bathroom, ensuring privacy and relaxation.

Elizabeth personally oversees every detail of the Inn, from its elegant decor to personalized guest services. She even offers pick-up services for those arriving at the local marina and airport, as well as a one-hour meet-and-greet with hors d'oeuvres to introduce guests to the area's attractions.

For the first time, The Blue Mystique Inn is remaining open year-round, welcoming winter travelers to enjoy a warm and cozy retreat. With fireplaces, down comforters, and the charm of a historic home, guests can experience the beauty of the Upper Peninsula in all seasons.



Elizabeth Douglas, owner and operator of The Blue Mystique Inn, entertains in the bed and breakfast's formal dining room in this snapshot by VIBE Photography.



**40th Annual  
KRUSIN KLASICS FUN RUN**  
at the U.P. State Fairgrounds  
**\$5 entry button (Veterans Free)**

**MAY 30TH & MAY 31ST 2025  
ONE LAST RIDE**

<p><u>Friday, May 30th</u> Parade in Downtown Escanaba @ 7pm</p> <p>Dance 8pm-Midnight @ Fairgrounds Entertainment by Grand Design Band!</p>	<p><u>Saturday, May 31st</u> Gates open @ 8am</p> <p>Car Show &amp; Swap Meet</p> <p>Raffle Drawing Starting at 4:30pm Music 12-4 Three Wheel Drive</p>
--	---

**krusinklassics.net**

**Discover Adventure  
Discover Quality!**



**Other nearby attractions:**

- Pictured Rocks
- Seul Choix Lighthouse
- Bishop Baraga Shrine



Fayette



Indian Lake Trail



**Quality  
INN**  
BY CHOICE HOTELS



Kitch-iti-kipi

**Free WiFi  
Free Hot Breakfast  
Pet Friendly  
Fitness Center**

**906-341-3777**

**905 E. Lakeshore Drive Manistique, MI 49854**



Stay Lakeside

## BLUE MYSTIQUE INN CONTINUED



Indulge in the exclusive Chef's Table at The Blue Mystique Inn, where a sophisticated atmosphere blends with outstanding dining. This stunning venue sets the perfect stage for your culinary adventure.

Chef Joshua creates a customized four to six-course meal, accommodating all dietary restrictions.

With its enchanting ambiance and exquisite dishes, it's the ideal setting for celebrating birthdays, anniversaries, engagements, or any special event.

Join us, it's FUN



For more information or to book a stay, please visit [www.thebluemystiqueinn.com](http://www.thebluemystiqueinn.com) or call (906) 221-5371.

About The Blue Mystique Inn

Built in the early 1900s, The Blue Mystique Inn is a beautifully renovated 5-bedroom historic home located in downtown Manistique. Offering luxury accommodations and unique dining experiences, the Inn provides guests with a perfect blend of historic charm and modern amenities.

Media Contact: <https://www.facebook.com/search/top?q=the%20blue%20mystique%20inn>



**WE SUPPLY  
THE NORTHLAND**  
VISIT US IN-STORE OR ONLINE AT  
[www.LMSUPPLY.com](http://www.LMSUPPLY.com)

**MISSION STATEMENT**  
The mission of the Erickson Center for the Arts is to enrich the mind, body and spirit of the Eastern Upper Peninsula communities we serve through the presentation of artistic and cultural exhibitions and programs. We strive to facilitate experiences that will encourage personal growth beyond our walls and our community. The Erickson Center for the Arts is a 501 (c) (3) tax exempt non-profit organization. Your charitable donation is tax deductible.

**Highlight Events Erickson Center/ The Pine Performance Center 2025**

- Kamryn Marck "Women of the Watch, Keepers of the Light" Stories of Female Lighthouse Keepers of the Great Lakes ~ May 21
- Visions between the Lakes Gallery Exhibit- May 30 -September 5
- Murder Mystery Dinner Theatre ~ June 5 & 6
- Music in the Park Series ~ Every Wednesday June 11- August 27
- Sarah Bomber "Broadway & Beyond" Concert ~ June 21
- Charlie Millard Band ~ July 10
- Missoula Children's Theater Production "Hansel & Gretel" ~ July 18
- 22nd Annual Wine & Cheese Tasting & Auction Fundraiser ~ July 26
- The Glenn Miller Orchestra ~ July 29
- 8th Annual 906 Festival ~ August 2
- Daddy's Boys Improv Comedy Show ~ August 7
- Allentown: A Billy Joel Tribute Band ~ August 23 & 24
- Shout! A Beatles Tribute Band ~ September 12
- ECA 10- Minute Play Festival~ September 19 & 20

**Erickson Center for the Arts / Waterfront Gallery & Gifts**  
N9224 Saw-Wa-Quoo St.  
Curtis, MI 49820  
906.586.9974  
Open year round Monday-Friday

Follow us on Facebook  
[www.facebook.com/EricksonCenter](https://www.facebook.com/EricksonCenter)



**Come Stay &  
Enjoy Your Day**



**Pet Friendly • Free Wireless & Complimentary Hot Breakfast • Plenty of room  
for your next conference, reunion, meeting or any other special event.**  
617 E. Lakeshore Drive • Manistique, MI 49854 • 906-341-6981

**GARLYN ZOO**  
Experience the Wild!

See Feed and Enjoy  
Native and Exotic  
Animals up close

[www.garlynzoo.com](http://www.garlynzoo.com)  
906-477-1085

40 minutes west of the Mackinac Bridge on US-2, Naubinway

Find us on Facebook  
[facebook.com/garlynzoo](https://facebook.com/garlynzoo)



# Make Manistique Your Hub!





# CURTIS

THE HEART OF THE  
MANISTIQUE LAKES AREA

(906)586-3700 • [curtiscofc@sbcglobal.net](mailto:curtiscofc@sbcglobal.net)



Photo Courtesy of Ray Lyons



## THE VILLAGE OF CURTIS BETWEEN THE MANISTIQUE LAKES

CALL OR CHECK THE WEB FOR OUR YEAR OF EXCITING EVENTS FOR  
WINTER • SPRING • SUMMER • FALL • YEAR-ROUND

FROSTBITE PIKE CONTEST • GROOMED SNOWMOBILE TRAILS • OKTOBERFEST • INDEPENDENCE DAY PARADE  
& CELEBRATION • SEASONAL FISHING CONTEST

**WWW.CURTISCHAMBER.COM**

THE MEMBERS AND ASSOCIATE MEMBERS OF THE MANISTIQUE LAKES  
AREA TOURISM BUREAU WELCOME YOU.

• BIRCH SHORES RESORT • THE BELVEDERE GRAND • KOZY'S RESORT  
LOG CABIN RESORT & CAMPGROUND  
MANILAK RESORT • PINE BLUFF RESORT • SAND & STARS RESORT  
SHERMAN'S RESORT • SUNSET PINES RESORT  
SUNSET POINTE RESORT

ASSOCIATE MEMBERS: CURTIS SERVICE  
FISH AND HUNT SHOP • STATE SAVINGS BANK



[www.curtismi.com](http://www.curtismi.com)

AREA TOURISM BUREAU



At the Delta-Schoolcraft ISD we adhere to the philosophy that every child is a lifelong learner who can achieve high standards.

- ◆ Our **Career Tech Students** have a job or post secondary placement rate of **97.3%**.
  - ◆ Our **Learning Center** students use an outcome based core curriculum to learn life skills and overcome disabilities
- DID YOU KNOW** the DSISD also provides...
- ★ Clear Lake Outdoor Education Center
  - ★ Special Education and General Education Supports
  - ★ Great Start Collaborative and Early Childhood Services

To learn more visit us at [www.dsisd.net](http://www.dsisd.net) or stop in!

*"The world needs all kinds of minds" ~  
Temple Grandin*

• Liquor • Gasoline  
**We fill Propane &  
Offer RV Refills -  
Call ahead for RV's**

100 Chippewa Ave.  
Manistique, MI 49854  
**906-341-5152**



Visit the  
**Upper  
Crust Deli**  
for Fresh Gourmet  
Sandwiches, Hearty  
Soups & Homemade  
Desserts

**906-341-2253**  
Waterfront Dining

5 Star Trip  
Advisor Rating



375 TRADERS' POINT DRIVE  
MANISTIQUE, MI  
Open 7 Days in Summer.  
Major credit cards accepted.  
*Dependably Delicious since 1999*

# GOLF



**A remarkable Golf Course  
In Michigan's Beautiful  
Upper Peninsula**

18 Holes - Par 72 ~ Slope rating 133  
All bent-grass greens, tees, and fairways impeccably maintained

- Reasonable Green Fees
- Power Cart Rentals
- Pro Shop
- Restaurant & Bar

**FOR TEE TIMES AND INFORMATION SEE US AT:**

1305 N. Birch Street • Manistique, MI

906.341.5600 • [www.indianlakegolfcourse.com](http://www.indianlakegolfcourse.com)



Michigan  
Department of  
Natural Resources

# Snowmobile Trails Schoolcraft County



Updated: 02/19/2025



0 1 2  
Miles

- P** Parking lot
- A** State forest campground
- x x** Temporarily closed trail
- Snowmobile trail
- Road Surface Type**
- Highway
- Paved road
- Gravel or dirt road
- State forest land
- State park
- State wildlife land
- Federal land
- Lakes and rivers
- County boundary

**Parking**  
**UP43<sup>[1]</sup>** Southside Fox River Rd SE of  
Int with Wagner Taylor Dam Rd.

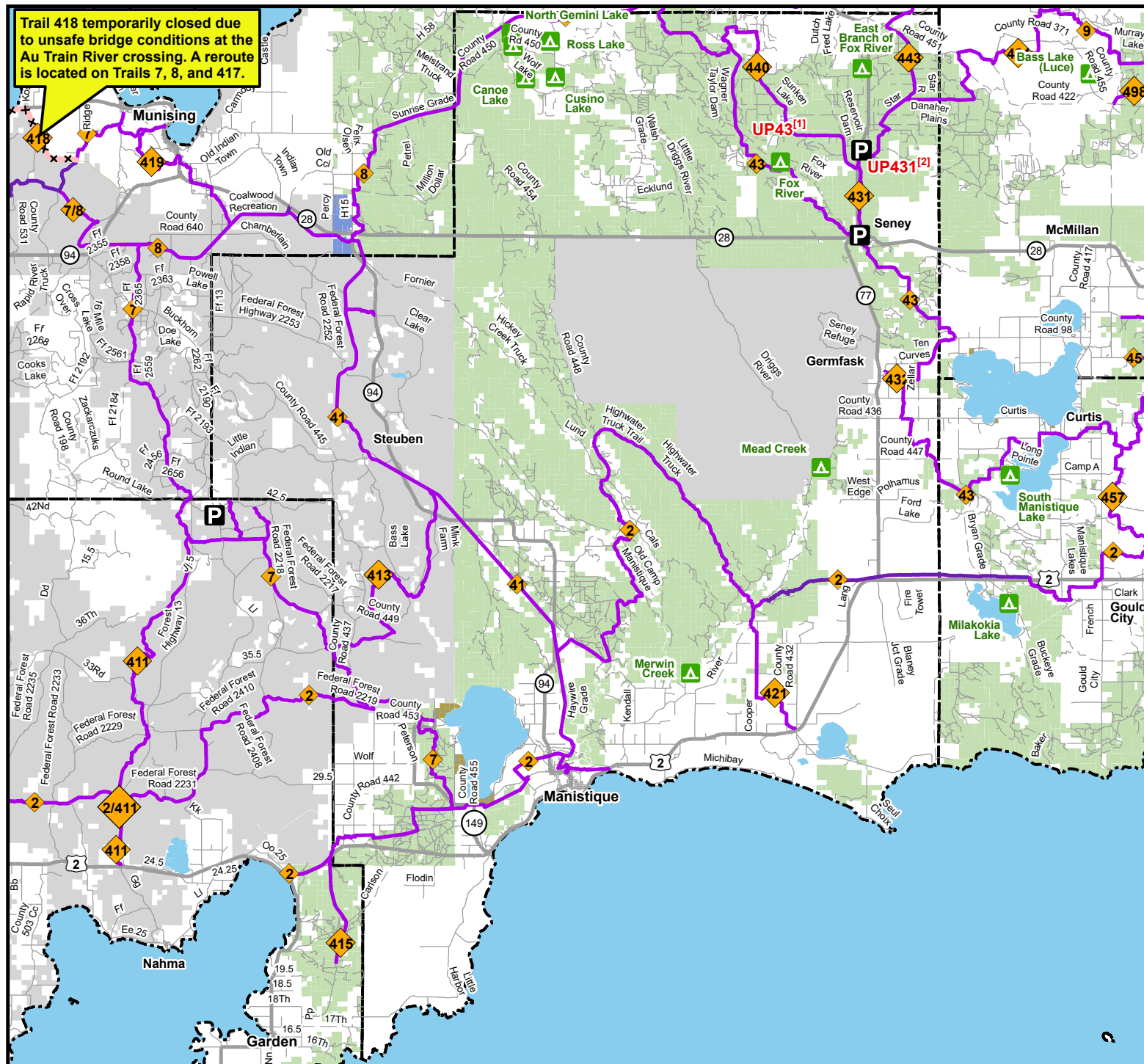
**UP431<sup>[2]</sup>** Eastside M-77, North of Int  
with Reservoir Dam Rd



**RIDE  
RIGHT**

Michigan.gov/Snowmobiling

**Trail 418 temporarily closed due to unsafe bridge conditions at the Au Train River crossing. A reroute is located on Trails 7, 8, and 417.**





*Don't Go Far*

## NEARBY ATTRACTIONS

### *Shipwreck Tours of Lake Superior*

Explore Lake Superior's shipwrecks either by diving or viewing through the floor of a glass bottom boat. The trip takes about two hours, visits two different shipwreck sites, rock cliffs, caves, a historic lighthouse, and the exquisite beauty of Grand Island and Munising Bay. It allows a firsthand view of wrecks including a rare, fully intact, wooden sailing ship that was built before the Civil War and sits only a few feet from the surface of the lake.

For more information, visit [www.shipwrecktours.com](http://www.shipwrecktours.com) or call 906-387-4477 for departure times and reservations.



### *Seul Choix*

The Seul Choix Point Lighthouse, pronounced "Sis-shwa" is located 8 miles off US-2, 12 miles east of Manistique, and was once the center for a thriving fishing community. Seul Choix, French for "only choice" is a Michigan Historic Site and a Michigan Historic Site National Historic Landmark. The lighthouse has a rich history, and some even claim it is haunted. Visitors and workers have reported strange happenings, including the sound of someone (an old lighthouse keeper, perhaps?) climbing the steps.

The complex includes a two-story home, restored and decorated, and several outbuildings. There is also a maritime museum with a dugout canoe - one of the rarest finds to be uncovered in the Midwest. The lighthouse is in cooperation with the DNR and is open Memorial Day through mid-October from 10 a.m. to 6 p.m., seven days a week.

Call 906-283-3183. (Directions: From the junction of US-2 and County Road 432 in Gulliver, go south on County Road 432 (Point Inland Road) about 4 miles to gravel road/ County Road 431. Turn right (West) onto County Road 431 and go about 4 miles to the lighthouse.)



## Grover Real Estate

Find your perfect UP North get-a-way or make your next move stress-free! Whether buying or selling, we use top-tier marketing & technology to deliver results. Cabins, land, or homes—we're your trusted real estate team in the Upper Peninsula.



*David Muxlow - 906-450-0184*

*Abbey Wood - 906-450-0222*

*Travis Wood - 906-450-5080*

*Corrina Johnson - 906-286-2978*

*Molly Gregurash - 906-450-1727*

*David Bleau - 906-450-3120*

*Lori Keinath - 906-286-1873*

*Jim Wethy - 906-450-2780*

*Lynne Giles - 906-450-0543*

*Sara Anderson - 906-280-5544*



906-341-2131



[www.GroverRealEstate.com](http://www.GroverRealEstate.com)



[email@groverrealestate.com](mailto:email@groverrealestate.com)

## WESTSIDE TOBACCO & MORE

**906-341-2024**

**We are MORE  
than just a Tobacco Store!**

*We Now Have...  
New Disposable Vapes For All Your  
Vaping Needs! Many New Items!! Candles,  
Dr. Squatch products, Hats, T-Shirts, Novelty  
Gifts And Cards, As Well As Chaga, CBD And  
Essential Oil Products.*

### OPEN

Monday thru Saturday: 8am to 7pm

Sunday: 10am to 4pm

315 Deer Street, Manistique, MI

**- VETERAN OWNED -**

**Check Us Out On Facebook**



# BUSINESS DIRECTORY

Thank You To These Businesses Who  
Made This Visitor's Guide Possible!

BAY COLLEGE	MANISTIQUE TROUT AND SALMON -
CAMPING WORLD	DERBY
CHINA KING	MUNISING VISITORS BUREAU
CHRISTOPHER'S ANTIQUES	NICOLET NATIONAL BANK
CLYDE'S DRIVE-IN RESTAURANT	OSWALD'S BEAR RANCH
COLEMAN ENGINEERING COMPANY	PAUL'S PLUMBING & APPLIANCE INC.
COMFORT INN	PICTURED ROCKS CRUISES
CURTIS AREA CHAMBER	PUTVIN HEALTHMART PHARMACY
DAILY PRESS	QUALITY INN
DAIRY KREAM	RIPTIDE RIDE
DELTA SCHOOLCRAFT ISD	SCHOOLCRAFT MEMORIAL HOSPITAL
END OF THE ROAD WINERY	SHIPWRECK TOURS
ERICKSON CENTER FOR THE ARTS	ST. FRANCIS DE SALES CATHOLIC PARISH
FIRST BAPTIST CHURCH ABC-USA	STATE SAVINGS BANK
FISH AND HUNT SHOP	STATE WIDE REAL ESTATE
FLATIRON BREWING	TAHQUAMENON FALLS BREWERY & PUB
GARLYN ZOO	TEAM CHEVY
GOOD NEIGHBOR SERVICES	THE BLUE MYSTIQUE INN
GRAY WOLF LODGE	THE BOUDROSE LOUNGE
GROVER REAL ESTATE	TOP OF THE LAKE
HABITAT FOR HUMANITY RESTORE	TREASURE CITY
HIAWATHA COUNTRY CHURCH	U.P. STATE FAIR
HIGHER LOVE CANNABIS CO.	UPPER CRUST DELI
INDIAN LAKE GOLF COURSE	WACKY JACKZ
KEWADIN MANISTIQUE CASINO	WESTSIDE TOBACCO
KRUSIN KLASSICS FUN RUN	WOODSTAR BEACH CAMPGROUND
L&M FLEET SUPPLY	ZELLAR
MANISTIQUE BIG BOY	ZEPHYR FUEL
MANISTIQUE FIRST UNITED -	ZION LUTHERAN CHURCH
METHODIST CHURCH	
MANISTIQUE OIL COMPANY	



## TAP 21

R. R. Branstrom

rbranstrom@dailypress.net

MANISTIQUE — Since December of 2016, TAP21 in Manistique has been serving exclusively Michigan craft brews from the lines fed through a striking back bar, a Brunswick-Balke-Collender that dates to 1983.

The history of the saloon is tied to that of the town. In the early 1870s, Abijah Weston and A.J. Fox of New York State purchased the Chicago Lumbering Company, whose assets included river rights and a small timber and saw mill at Manistique. At the time, the settlement only had the sawmill, two slips at the mouth of the river, a handful of homes, a boarding house and a store.

Weston and Fox rapidly built up the Chicago Lumbering Company and expanded the town of Manistique, improved and grew the sawmill and erected new homes. Chicago was rebuilding after the great fire, and demand for production of building materials was high. Weston formed a second timber company with mills on the west side of the Manistique River and named it the Weston Lumber Company.

Between the Chicago and Weston companies, both of which had the same officers and stockholders, the two companies owned almost the entire town. They were famously opposed to alcohol and aimed to keep Manistique dry. To that end, properties leased or sold by the lumber companies came with a clause that "the premises could not manufacture, store or sell intoxicating liquors," according to a Schoolcraft County Historical Society article by Vonceil LeDuc.

## WOODSTAR BEACH CAMPGROUND

Call now to book your reservations • 906-450-5828

Woodstar Beach Campground, located at 1786 S Little Harbor Road, in Thompson, just south of Manistique, will open to guests May 24 through October 13. Featuring a quarter-mile worth of Lake Michigan water frontage, campsites are located directly on the beach in a sandy, serene, wooded and clean environment.

The campground offers options from RV spots to primitive campsites for all styles of campers. Amenities at the campground include water, fire rings, a playground, electric hookups (30 and 20 amp), showers, laundry and a dumpstation.

For more information about the campground or to make a reservation, call Joanne Holmes at 906-450-5828 for booking information.



The beach at Woodstar Beach Campground



A spot for beach-side campfire

Rust tent sites - \$30 per night  
RV sites - \$55 per night



## TAP 21 CONTINUED

The ban created a niche waiting to be filled.

A man named Dan Heffron bought the only property not owned by the lumber companies and built multiple structures, LeDuc wrote. One was a saloon.

Seeing the tavern's success, other entrepreneurs followed suit. One was Nels Johnson, a Swedish immigrant who began working as a lumberjack for the Chicago Lumbering Company in the early 1880s.

"Nels saw how excellent Heffron's business was, so he bought property from Heffron and built a saloon, so Swedes could drink at an establishment owned by a fellow country-man," wrote LeDuc.

In 1910, the Nels Johnson Saloon sold to Emil and Fred Ekberg, according to the historical society. The name "EKBERG" is still seen in tiles on the stoop of 242 S. Cedar St.

The original 24-by-14-foot mahogany back bar and stamped tin ceiling that made up the ornate interior of the saloon that opened over 130 years ago are also still on display today in what is now TAP21. Owner Tiffany Gault said that it's common for people to stop in their tracks in the entryway in awe when they see the bar.

It operated as the Ekberg Tavern until 1960. From that point, it became the Harbor Bar, and did business with that name under a handful of proprietors, including Robert and Aspasia Walters, who ran it between 1962 and 1981, and Robert "Joe" and Mary Kay Wood.

The place ended up closing down in the mid 80s. Gault said that it had been shut for about eight years when the sale price dropped to something that appealed to her.

With a new concept for the establishment – an eatery with 21 taps at the bar dispensing exclusively Michigan craft beers and ciders – Gault had a fair bit of remodeling to do.

"It didn't have the tap lines before," she said. "We installed a glycol chiller, and we've got trunk lines making sure that the beer is pushed up at 32 degrees so we yield the most out of every keg."

"I opened it December 10th with the hopes to work the first two years still at the bank, just to make sure that this got off the ground," Gault explained, "but this kind of took off. So I was done with the bank by January 1st. I had no choice."

After TAP21 began serving food, business took off even more. Now, booming patronage means that the place employs close to 40 people in the summer, the peak season.

"We sell through like, 35, 40 kegs a week all summer long," Gault reported, adding that vendors have told her that TAP21 outsells some bars in Marquette.

As far as food, the menu offers appetizers, soups, salads, sandwiches, pizza, tacos, seafood, pasta, steak, and a kid's menu.

Gault said that TAP21's prime rib tacos are a favorite of many, and that Friday fish fries and Saturday prime rib nights are very popular, too.



R. R. Branstrom | Daily Press  
At TAP21 in Manistique, owner Tiffany Gault pulls a Michigan-made draft cider for a patron.

A proclaimed ketchup lover, Gault said that TAP21's bacon onion jam is so good she doesn't use ketchup on the TAP burger, a specialty that also comes with housemade beer cheese.

TAP21 hosts themed parties, karaoke, and DJ nights, usually in the summer. Occasionally, the establishment is rented out for private parties. Right now, the bar is decorated for St. Patrick's Day, and a karaoke night is planned for Saturday the 15th.

One thing customers can look forward to is the opening of a second floor at TAP21. The second story used to house four apartments, but it's been undergoing a remodel and is well on its way to becoming another bar. Having found an old sign with beer prices from 1981, Gault said she's considering calling the upper level the "Harbor Bar" unofficially.

The capacity of the ground floor is 77; upstairs it will be 71.

TAP21 opens at 11 a.m. daily. In the winter, the place stops serving food at 9 p.m.; in the summer, food stops at 10 p.m. Bar closing time depends on business.

## Manistique Oil Company



*Proudly Serving the Manistique Community*

- ✓ Full Service Gas Station
- ✓ Propane available
- ✓ Ethanol Free Premium Gas

**906-341-2817**  
216 Deer St., Manistique, MI



*Over 100 Years of Serving Our Community.*



**WWW.STATESAVINGSBANK.COM**





*The Best Little Ice Cream Shop  
in Manistique, MI.*



**DAIRY KREAM**

24 Flavors of soft serve

Hand-dip 20 Flavors • Soft Serve 24 Flavors • Malts/Shakes  
Sundaes • Flurries • Hot Dogs • Nachos • Soft Pretzels • Slushies

***YUM, YUM, YUM!***

**182 River St. Manistique, MI 49854**  
**906-341-5921**



PICTURE YOURSELF AT THE  
NORTHERNMOST POINT OF LAKE MICHIGAN  
N 46° 05.218' / W 085° 26.670'  
MARINA DR, NAUBINWAY, MI 49762  
ON THE US-2 SCENIC HIGHWAY

TOPOFTHELAKE.ORG







## A Flavorful Stop for the Whole Crew!

375 Traders Point Dr. Stop #4  
Manistique, MI 49854

(906) 286-4470 | [www.flatiron-brewing.com](http://www.flatiron-brewing.com)



**Loney & Margo Withey**  
Executive Directors

**906-341-3927**

200 Deer Street  
Manistique, MI 49854  
[goodneighbors1@hotmail.com](mailto:goodneighbors1@hotmail.com)

### Services Provided

Resale Store  
Food Pantry  
Utility Assistance  
Personal Finance Counseling  
Spiritual Counseling

**Volunteers are always Welcome**

**TEAM**  
CHEVROLET



323 S. Maple St. Manistique  
[teamchevyauto.com](http://teamchevyauto.com)

**906-451-4264**

MANISTIQUE, MI

## Disposal Types:

- Residential • Commercial
- Roll-Off Containers

**Zellar**  
SANITATION INC.

**Zellar Sanitation, Inc.**

906-341-6955 | 415 Chippewa Ave., Manistique, MI

## LINDA'S BREAD BOX & SPORTING GOODS

WE ARE ON YOUR WAY TO BIG SPRING & INDIAN LAKE!

- Full Line of GROCERIES • ATM
- PROPANE • GASOLINE
- CAMPING SUPPLIES
- FISHING & HUNTING LICENSES
- BEER & WINE • PACKAGE LIQUOR
- LIVE BAIT • AUTOMOTIVE SUPPLIES
- BAGGED ICE • MICHIGAN LOTTERY
- Marble Arm Knives
- U.P & Michigan Novelty, Shirts, Mugs, Bags



We have a LARGE  
SELECTION of FISHING  
TACKLE & HUNTING  
ACCESSORIES!

RODS, REELS,  
COMBOS & FISHING TACKLE  
BAGGED BAIT, AMMO, CALLS,  
GUN CASES, KNIVES & MORE!



Find us on Facebook  
[@Lindasbreadbox](https://www.facebook.com/Lindasbreadbox)

**YOUR ONE-STOP  
STORE!**

10N STATE HWY. M-149  
COOKS, MI

**906-644-2284**  
CREDIT CARDS, BRIDGE CARDS

10N State Hwy. M-149, Cooks, MI 49817

**906-450-3248**

Mary DeKeyser - Broker/Owner





## SUMMER EVENTS

28 June	Pioneer Day
1 July	4th of July Parade
7-8 July	34th Annual Folk Festival
8 July	Fireworks Display
24 July	40th Trout & Salmon Derby
28 - 6 July August	Tour Da Yoop, Eh! UP Bike Ride
4 August	Cedar Street Slam
10-14 August	Memorial Moving Wall
20 August	51st Cooks Corn Roast
26 August	Hops on the Harbor
26-27 August	Blue Ribbon Art Fair Event
2 September	Manistique Car Show

For more information visit

[www.discovermanistique.com/eventcalendar](http://www.discovermanistique.com/eventcalendar)

[WWW.VISITMANISTIQUE.COM](http://WWW.VISITMANISTIQUE.COM) • [WWW.CITYOFMANISTIQUE.ORG](http://WWW.CITYOFMANISTIQUE.ORG)







**PICTURED ROCKS  
CRUISES**

## **DISCOVER ONE OF AMERICA'S RAREST GEOLOGICAL WONDERS**

Take an adventure cruise along Pictured Rocks National Lakeshore! Be one of the few to explore these rainbow-colored sandstone formations up close-cruising along miles of shoreline in America's largest and deepest Great Lake.



**Book Now at  
PicturedRocks.com  
(906) 387-2379**



**PLAN YOUR TRIP AT MUNISING.ORG**